

STUDIO APARTMENT NORTH & SOUTH FACING

Studio Apartment, 1 Bathroom

North & South facing to courtyard

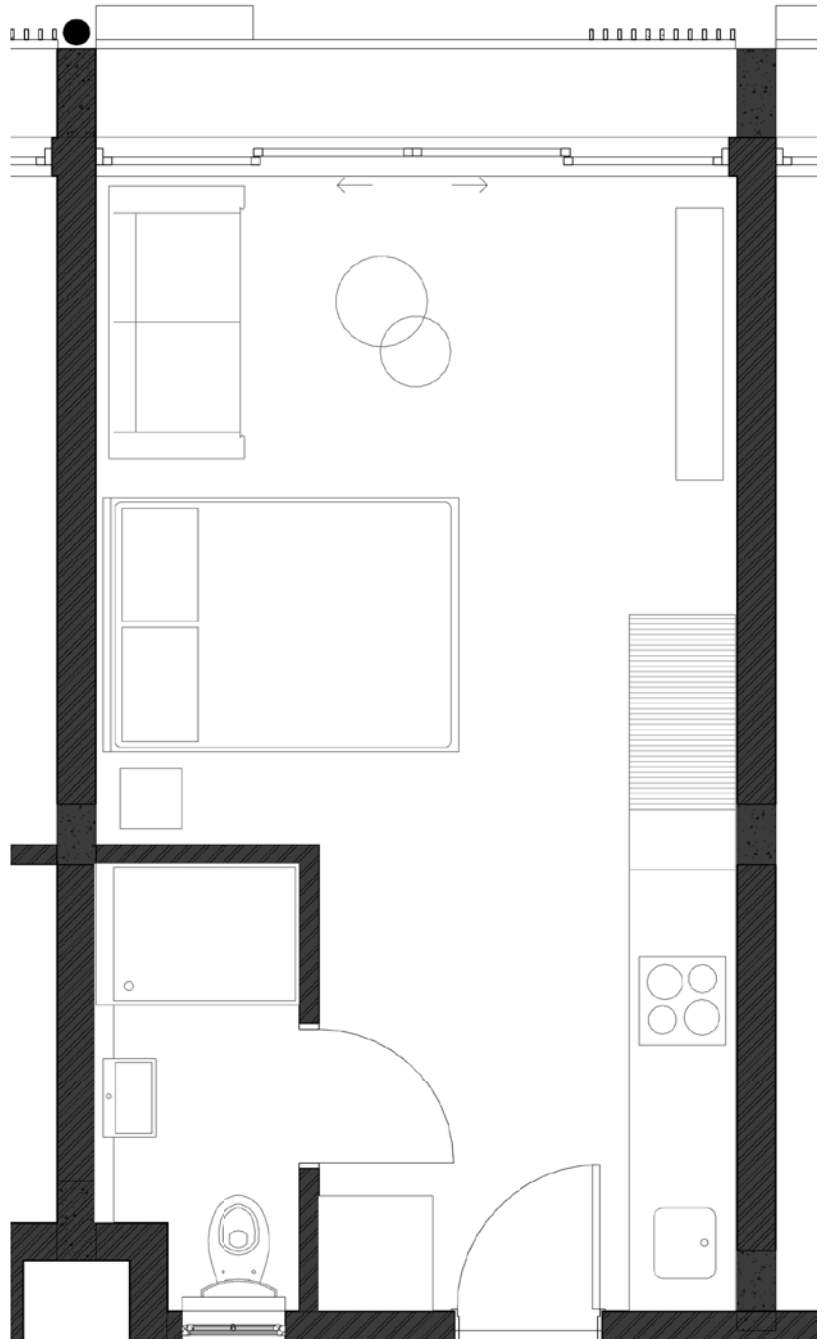
North facing to Worcester Road with
1 parking

Internal Size: 26 m²

Balcony: 2 m²

Total Size: 28 m²

Note: First Floor Courtyard Studio
Units include Patio Garden





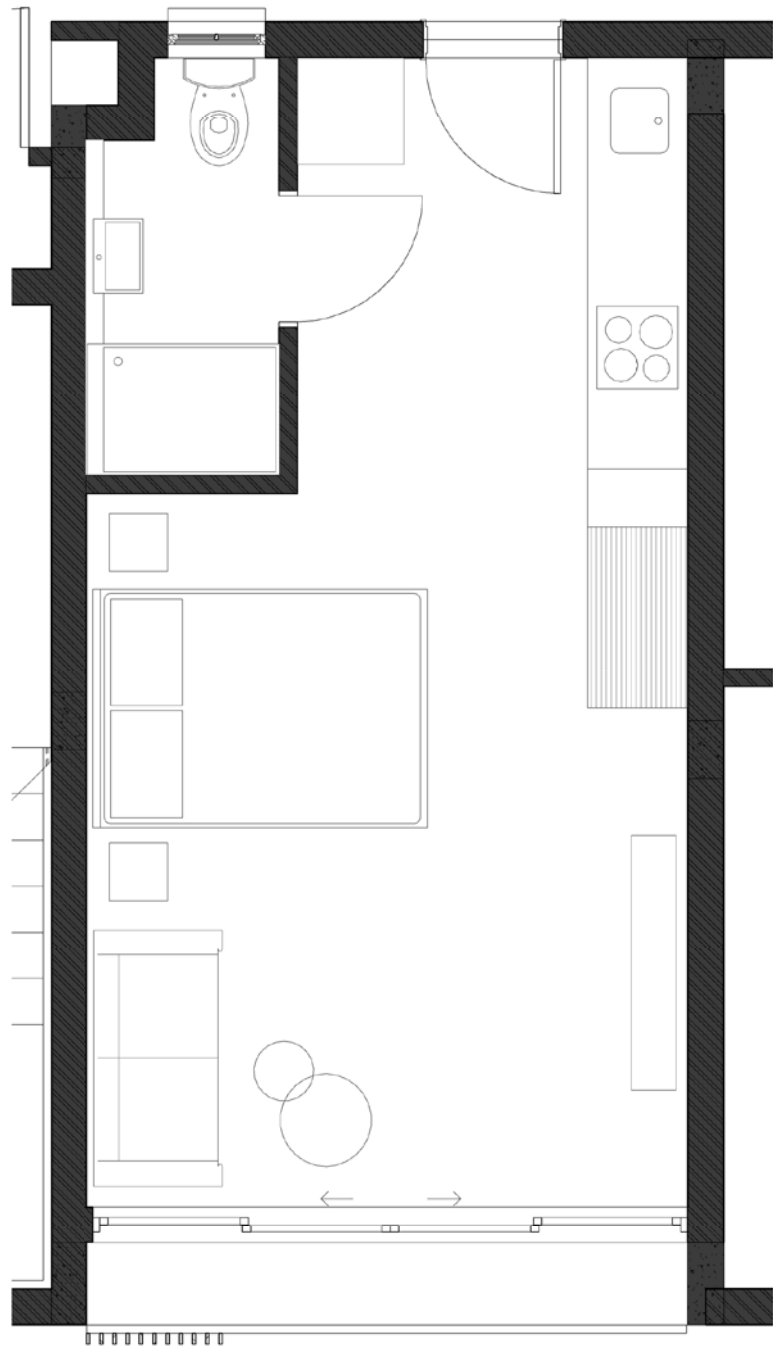
STUDIO APARTMENT WEST FACING

Studio Apartment, 1 Bathroom, 1 Parking
facing Sunset

Internal Size: 28 m²

Balcony: 2 m²

Total Size: 30 m²



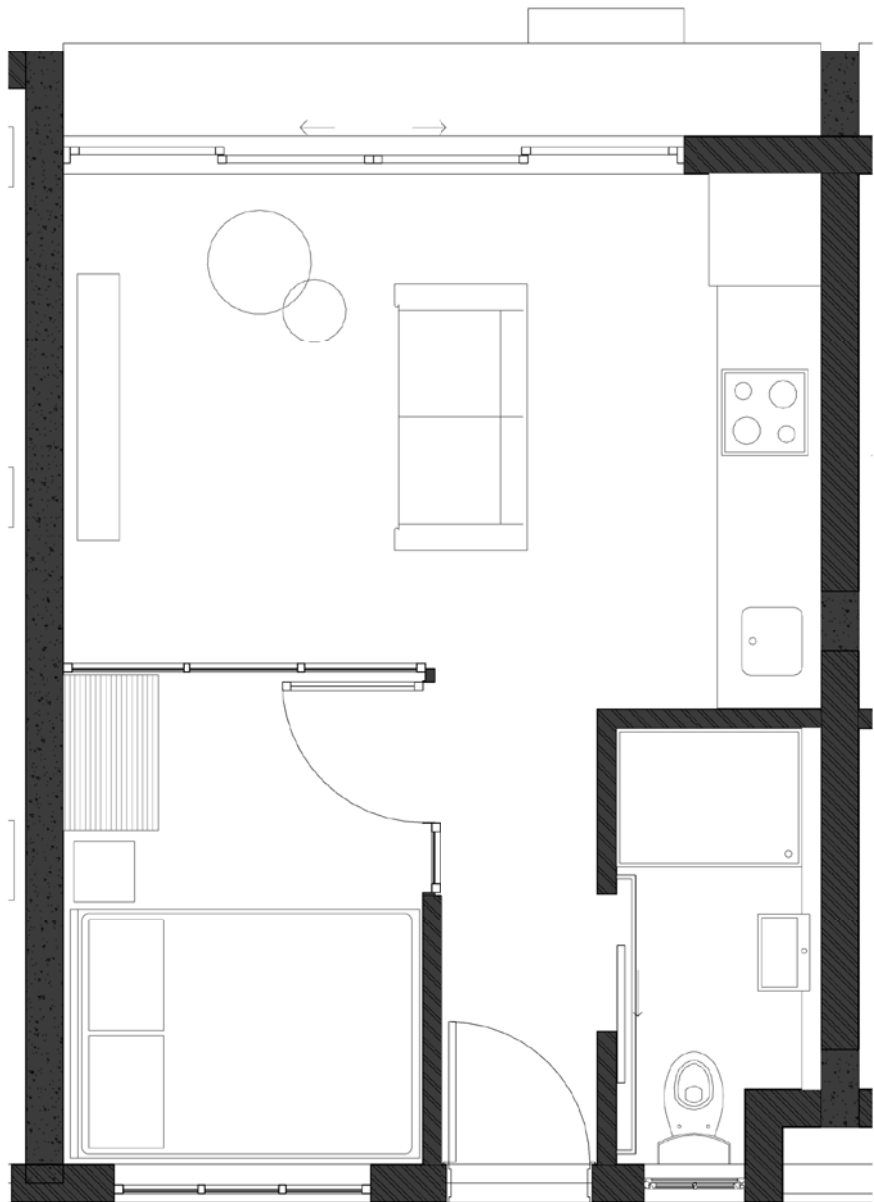
1 BEDROOM APARTMENT EAST FACING

1 Bedroom Apartment, 1 Bathroom, 1 Parking
facing Oxford Road

Internal Size: 27.5 m²

Balcony: 2.5 m²

Total Size: 30 m²



ALTERNATIVE 1 BEDROOM APARTMENT EAST FACING

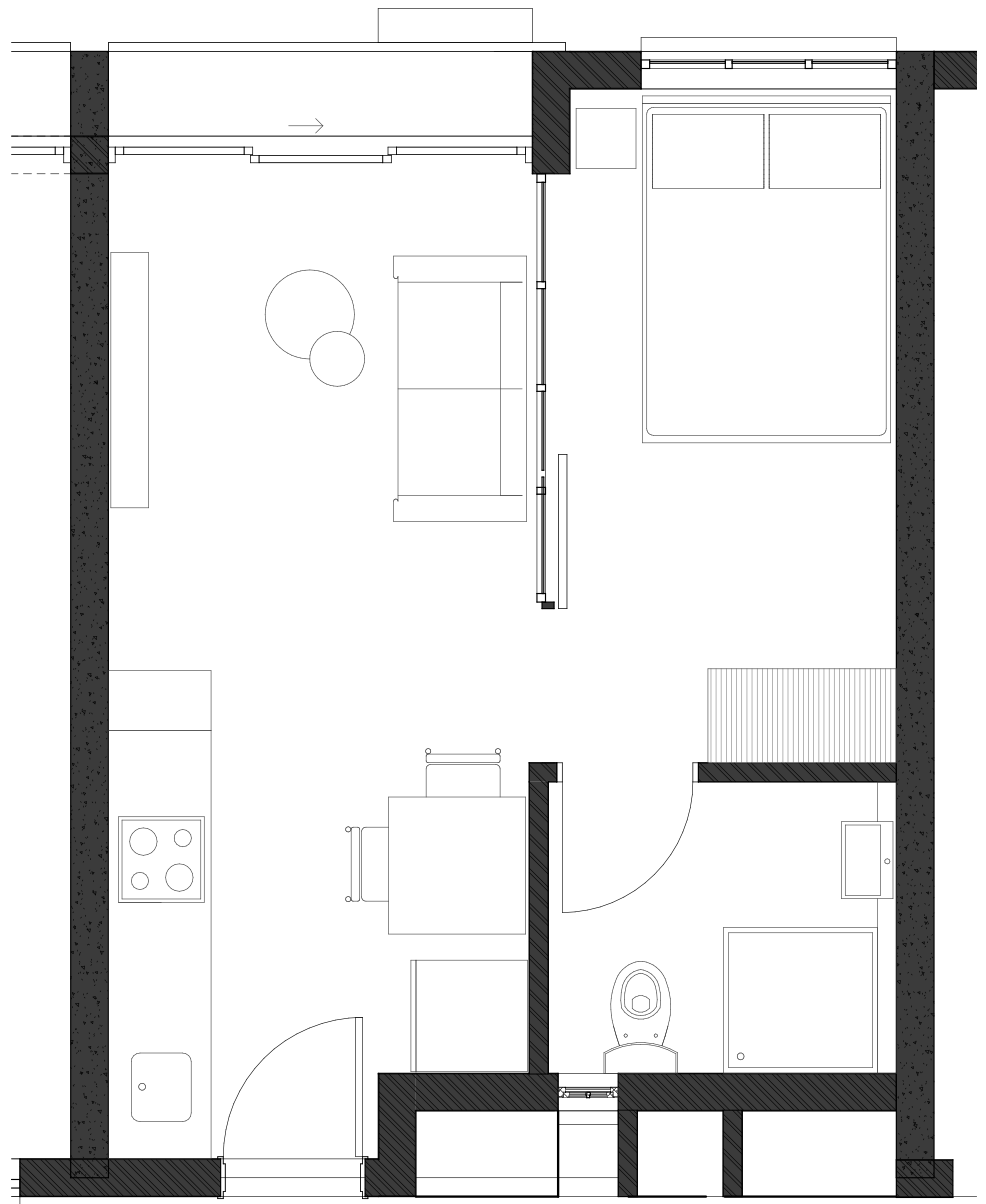
1 Bedroom Apartment, 1 En-Suite Bathroom, 1 Parking
facing Oxford Road

Internal Size: 27.5 m²

Balcony: 2.5 m²

Total Size: 30 m²

5
UNITS



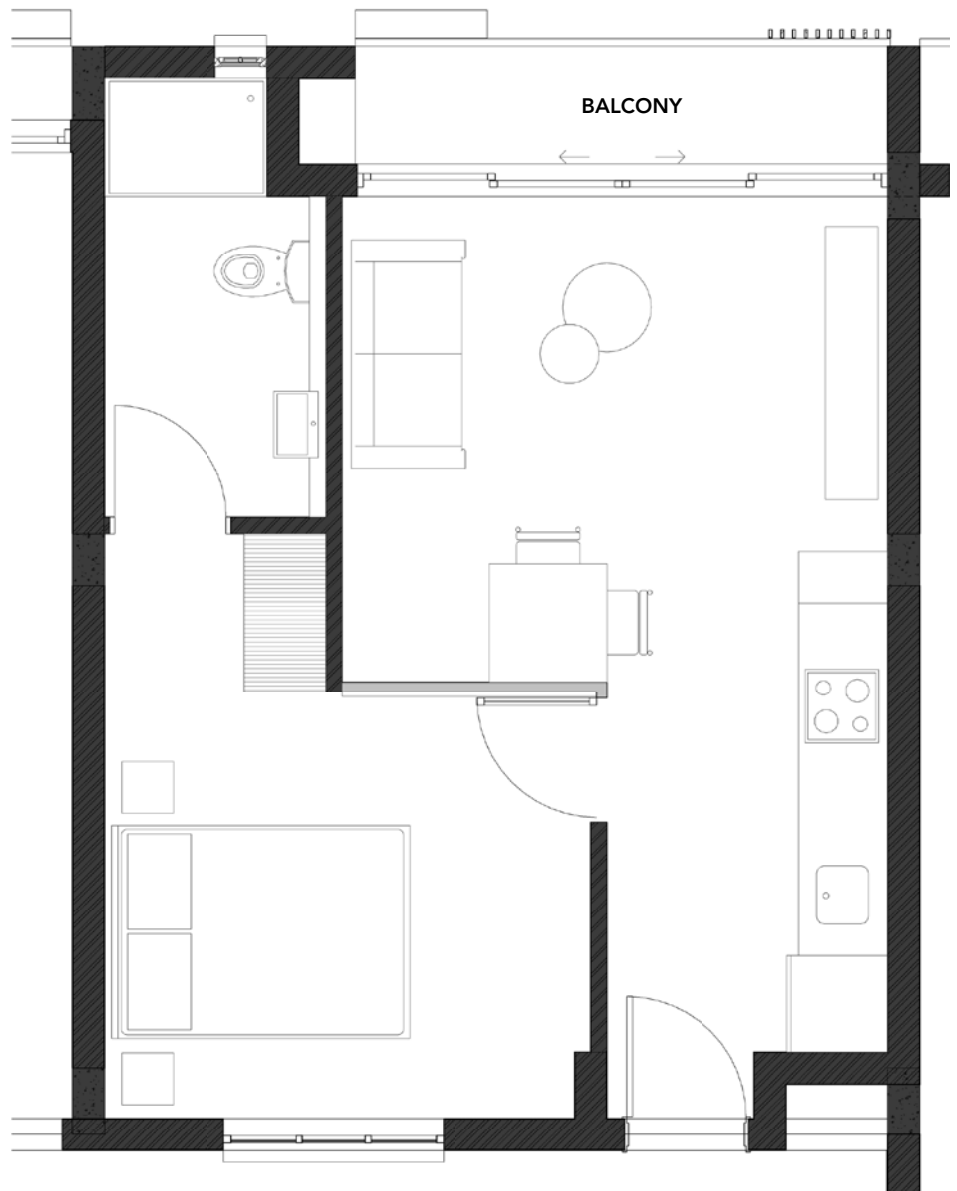
1-BEDROOM APARTMENT NORTH FACING

1 Bedroom Apartment, 1 En-Suite Bathroom, 1 Parking
facing Worcester Road

Internal Size: 37 m²

Balcony: 3 m²

Total Size: 40 m²



2-BEDROOM APARTMENT

2 Bedroom Apartment, 1 Bathroom, 1 Parking

West Facing Sunset

Internal Size: 57 m²
Balcony: 2 m²

Total Size: 59 m²

North Facing Worcester Road

Internal Size: 54 m²
Balcony: 2 m²

Total Size: 56 m²



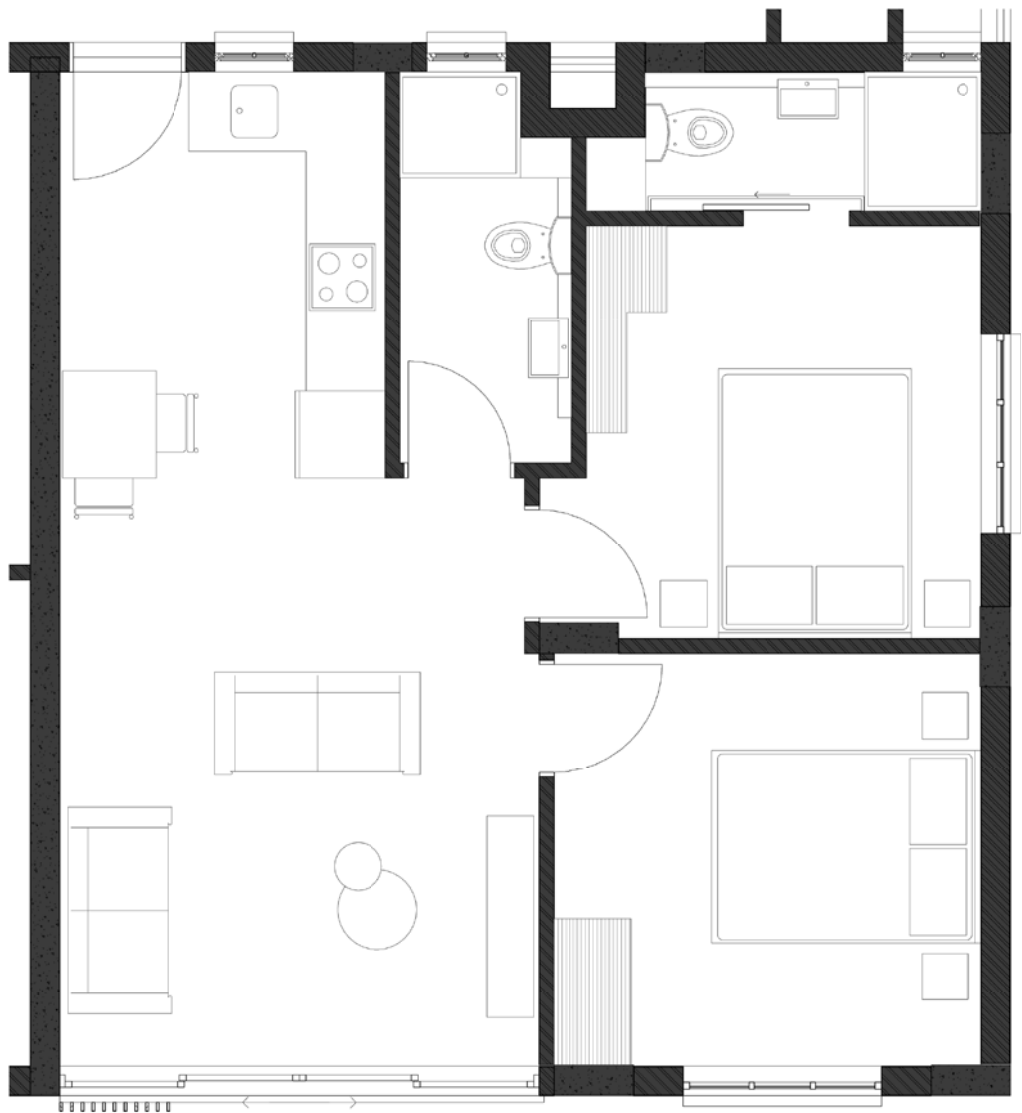
2-BEDROOM CORNER APARTMENT WEST FACING

2 Bedroom Apartment, 1 Bathroom plus 1 En-Suite Bathroom, 1 Parking
facing Sunset

Internal Size: 55 m²

Balcony: 0 m²

Total Size: 55 m²



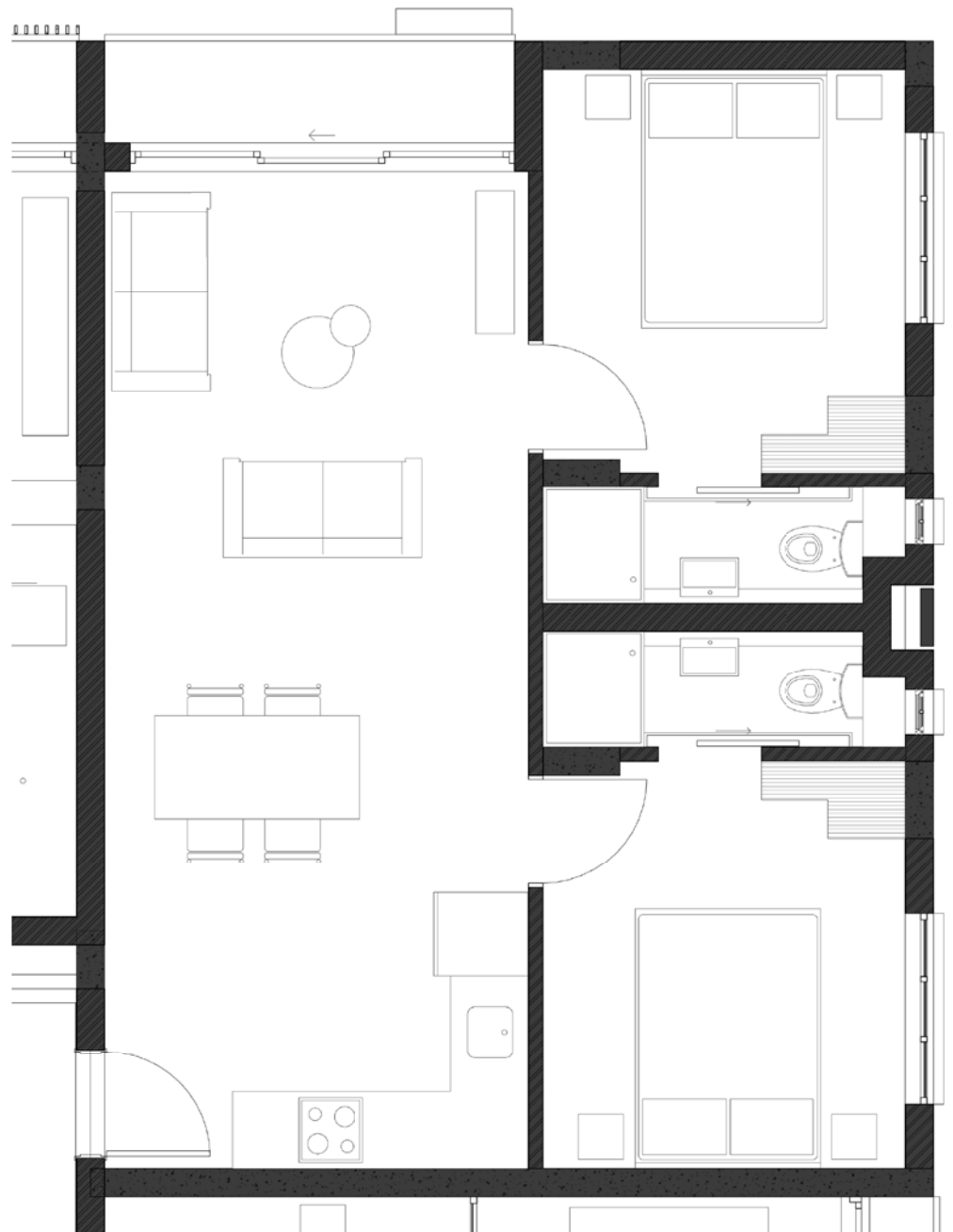
2-BEDROOM CORNER APARTMENT NORTH FACING

2 Bedroom Apartment, 2 En-Suite Bathrooms, 1 Parking
facing Worcester Road

Internal Size: 54 m²

Balcony: 3 m²

Total Size: 57 m²



PENTHOUSE APARTMENT NORTH FACING

2 Bedroom Apartment, 2 En-Suite Bathrooms, 2 Parking, Private Patio & Braai Area
facing Worcester Road

Internal Size: 56 m²

Patio: 28 m²

Total Size: 84 m²

